



FOUNDRY

BRAGONZI

Lonate Pozzolo (VA)

CONTACT DETAILS AND INFORMATION

Name	Bragonzi Spa Fonderie Costruzioni Meccaniche
Address	Via Dante, 36 - 21015 Lonate Pozzolo (VA)
Tel (Export manager)	+39 039 2848636
Fax (Export manager)	+39 039 2025821
Mail (Export manager)	info@gslexport.it
Employee	60
Turnover	8,5 milioni

Cast iron and special (antiwear) alloys. Gray and spheroidal cast iron 0-100 kg to 1,000-10,000 kg

ORGANIZATION

Experience

Bragonzi Spa can boast a 75-year-old activity and tradition in the production of very complex cast iron products. Our foundry produces flake graphite and spheroidal cast iron castings as well as chrome white cast iron, Ni-Hard and Ni-Resist weighing from 0,1 to 10,000 kg. Over the last few years the company has strengthened its market positioning by paying attention to development, new technology and production process verticalization, with direct control of all processing stages. These choices have allowed Bragonzi to become

famous among users and important international industrial groups in various sectors. More than 60% of the production concerns abrasion-proof alloys with a high chrome content, produced with the Crom-Hard® registered trademark. In addition to the foundry, Bragonzi has a machine shop carrying out casting mechanical processing and assembling of horizontal boring stations. The company is headquartered on an area of about 35,000 m², few kilometers away from Milan Malpensa airport.



GSL - EXPORT Group Subfor Lombardy - via Gaslini, 1 - 20900 Monza (MB) Italy • P.IVA 02281320966
T. +39.039.2848636 • F. +39.039-2025821 • M. info@gslexport.it • W. www.gslexport.it



FOUNDRY

BRAGONZI

Lonate Pozzolo (VA)

COMPANY POLICY

Since its foundation the values inspiring Bragonzi Spa have been its history and production knowledge, which has always been oriented towards excellence. Bragonzi's mission is efficient innovation. They also do their best to make sure the production is environmentally friendly. They want to make sure their customers are constantly offered the best product at the lowest price.

APPLICATIONS

Cast iron produced by BRAGONZI SpA is used in a whole range of sectors. In particular, the Crom-Hard® and Ni-Hard antiwear alloys are used for the following main applications:

Cement and mining industry

- Armors for tube mills, armors and hammers for crushers.

Grinding industry

- Rollers and rings for crushing coal, clay, bentonite, etc.

Mixing industry

- Blades for horizontal and vertical axis mixers, turbomixers, etc.
- Coating armors for mixing tanks.

Energy industry

- Spare parts for power plants

Further applications

- Pumps for abrasive materials, concrete pumps.
- Farm machinery spare parts.
- Wear parts for sandblasting and shot peening machines.
- Wear parts for wood grinding systems.
- Breaking plow hammers.

FACILITIES

Fonderie Bragonzi Spa have an efficient lab provided with modern equipment and qualified technicians for controlling all production process stages and testing castings. The foundry has the following main facilities:

Melting Furnaces

- 5 electrical induction furnaces with a capacity from 2 to 15 tons, of which: 2 medium-frequency electrical furnaces with a capacity of 6 t (3,000 kW)
- 1 electrical furnace with a capacity of 15 t
- 1 electrical furnace with a capacity of 6 t
- 1 medium-frequency electrical furnace with a capacity of 2 t

Coremaking

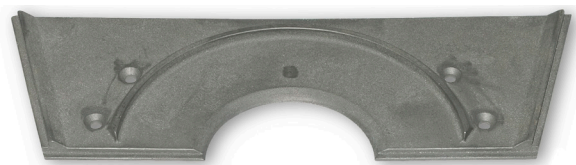
This division has various facilities for producing cores, manufactured through different methods: Fascaldo, Cold-Box and self-hardening.

Automatic Molding

Green molding is carried out through an automatic system. Casting is done through a mechanized system enabling direct cast iron inoculation.

“No-Bake” Molding

“No-bake” molding is carried out both through a mechanized “fast-loop” system - capable of manufacturing snaps up to 1,200x1,500 mm - as well as manually with either snaps or in the casting



GSL - EXPORT Group Subfor Lombardy - via Gaslini, 1 - 20900 Monza (MB) Italy • P.IVA 02281320966
T. +39.039.2848636 • F. +39.039-2025821 • M. info@gslexport.it • W. www.gslexport.it



FOUNDRY**BRAGONZI**Lonate Pozzolo (VA)

pit. Bragonzi's facilities are provided with mixers prepreparing automatically various types of molding mixtures according to casting production needs.

Treatments

This division is equipped with several methane and electrical treatment furnaces allowing Bragonzi to carry out casting heat treatments: recovery - annealing - hardening and drawing.

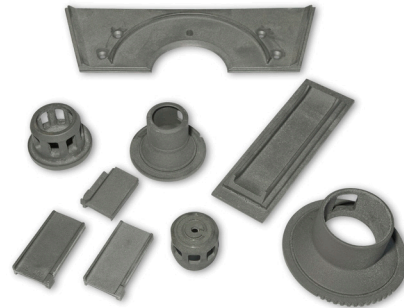
For hardening and drawing treatments of small castings, this division is provided with automatic continuous furnaces always guaranteeing a uniform result.

Finishing

The deburring division is equipped with many booths having hanging grinders and cutting-off machines for deburring large castings. This division also has cluster-type, carriage-type, rotary-tabletype as well as conveyor-type sandblasting machines for casting finishing.

Mechanical Processing

In addition to the services offered to our customers by our foundry division, the company has a special division for casting mechanical processing. This division is equipped with various numerically-controlled machine tools such as horizontal processing stations, boring and milling machines, vertical and horizontal lathes, grinding machines for complete customized casting processing. The company also has an assembling and painting division.

**QUALITY CONTROL**

The company uses an efficient laboratory equipped with state-of-the-art instruments as well as qualified technicians for an exhaustive control during all production process stages. A high level of quality control is therefore always guaranteed. Traceability is also possible thanks to the registration of all casting analyses carried out through a quantometer. Data is available through the laboratory. Furthermore, the laboratory offers a wide range of instruments for tests and controls, namely:

Chemical analysis

ARL Eltra FKV spectrometer

Tensile tests

Metro Com tensile machine

Resilience tests

Metro Com Charpy machine

Hardness tests

Ernst durometer

Ultrasound tests

Gilardoni instrument; qualified operator according to UNI EN 473 ISO 9712 standard / 2ND level

Micrography tests

Reichert microscope

Liquid penetrant testing.

GSL - EXPORT Group Subfor Lombardy - via Gaslini, 1 - 20900 Monza (MB) Italy • P.IVA 02281320966
T. +39.039.2848636 • F. +39.039-2025821 • M. info@gslexport.it • W. www.gslexport.it
